



www.billbeall.com

1,750 SF - FOR LEASE

Kansas Station

3037 S. Kansas Expressway, Springfield, MO



HIGHLIGHTS

- 1,750 SF
- Sizeable Conference Room
- Front Door Parking
- Zoned: General Retail
- CAM: +/- \$3.70/ SF = \$540.00 / Month
- Lease Rate: \$10.00 / SF = \$1,458.00 / Month
- Estimated Monthly Payment = \$1,998.00



FOR ADDITIONAL INFORMATION CONTACT

Bill Beall Co., Inc.

2921 S. National Ave., Springfield, MO 65804

(417) 887-5535 email: beall@billbeall.com

Kansas Station

3037 S. Kansas Expressway, Springfield, MO



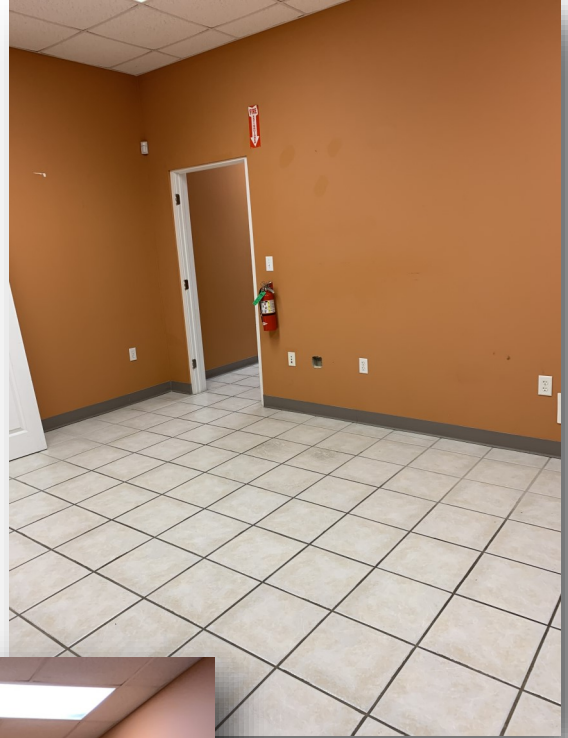
FOR ADDITIONAL INFORMATION CONTACT

Bill Beall Co., Inc.

2921 S. National Ave., Springfield, MO 65804

Kansas Station

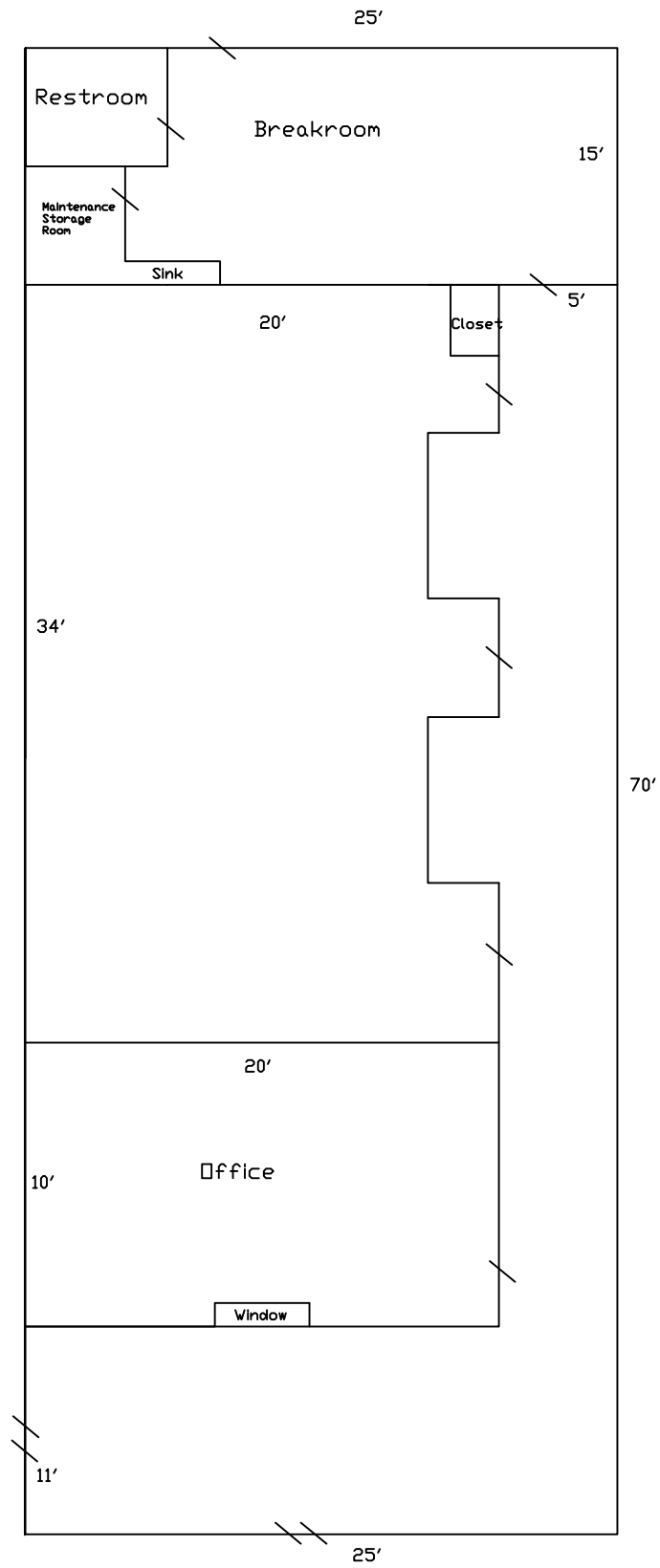
3037 S. Kansas Expressway, Springfield, MO



FOR ADDITIONAL INFORMATION CONTACT

Bill Beall Co., Inc.

2921 S. National Ave., Springfield, MO 65804



3037 S. Kansas Expressway

Kansas Station

3037 S. Kansas Expressway, Springfield, MO



FOR ADDITIONAL INFORMATION CONTACT

Bill Beall Co., Inc.

2921 S. National Ave., Springfield, MO 65804

Kansas Station

3037 S. Kansas Expressway, Springfield, MO



Traffic Counts:

Kansas Expressway N. of Battlefield = 36,770

Kansas Expressway S. of Battlefield = 31,039

Battlefield E. of Kansas Expressway = 27,941

Battlefield W. of Kansas Expressway = 27,466

FOR ADDITIONAL INFORMATION CONTACT

Bill Beall Co., Inc.

2921 S. National Ave., Springfield, MO 65804

(417) 887-5535 email: beall@billbeall.com



Business Summary

3009 S Kansas Expy, Springfield, Missouri, 65807
Rings: 1, 3, 5 mile radii

Prepared by Esri
Latitude: 37.15954
Longitude: -93.31817

Data for all businesses in area

	1 mile		3 miles		5 miles	
	Number	Percent	Number	Percent	Number	Percent
Total Businesses:	450		3,924		8,415	
Total Employees:	5,563		79,679		161,525	
Total Residential Population:	9,317		77,645		172,343	
Employee/Residential Population Ratio (per 100 Residents)	60		103		94	
by SIC Codes	Number	Percent	Number	Percent	Number	Percent
Agriculture & Mining	8	1.8%	52	0.9%	310	0.4%
Construction	30	6.7%	208	3.7%	1,254	1.6%
Manufacturing	16	3.6%	271	4.9%	1,631	2.0%
Transportation	7	1.6%	72	1.3%	907	1.1%
Communication	2	0.4%	14	0.3%	1,166	1.5%
Utility	2	0.4%	264	4.7%	521	0.7%
Wholesale Trade	34	7.6%	768	13.8%	1,863	2.3%
Retail Trade Summary	83	18.4%	1,336	24.0%	17,484	21.9%
Home Improvement	4	0.9%	30	0.5%	478	0.6%
General Merchandise Stores	2	0.4%	272	4.9%	2,251	2.8%
Food Stores	10	2.2%	240	4.3%	1,435	1.8%
Auto Dealers, Gas Stations, Auto Aftermarket	11	2.4%	70	1.3%	1,736	2.2%
Apparel & Accessory Stores	4	0.9%	13	0.2%	967	1.2%
Furniture & Home Furnishings	8	1.8%	63	1.1%	425	0.5%
Eating & Drinking Places	17	3.8%	334	6.0%	5,494	6.9%
Miscellaneous Retail	28	6.2%	314	5.6%	4,699	5.9%
Finance, Insurance, Real Estate Summary	53	11.8%	399	7.2%	4,409	5.5%
Banks, Savings & Lending Institutions	11	2.4%	159	2.9%	1,261	1.6%
Securities Brokers	8	1.8%	24	0.4%	315	0.4%
Insurance Carriers & Agents	9	2.0%	40	0.7%	813	1.0%
Real Estate, Holding, Other Investment Offices	25	5.6%	176	3.2%	2,020	2.5%
Services Summary	189	42.0%	2,007	36.1%	48,722	61.1%
Hotels & Lodging	1	0.2%	7	0.1%	14	0.4%
Automotive Services	11	2.4%	51	0.9%	73	1.9%
Motion Pictures & Amusements	15	3.3%	79	1.4%	101	2.6%
Health Services	26	5.8%	684	12.3%	378	9.6%
Legal Services	7	1.6%	25	0.4%	408	0.5%
Education Institutions & Libraries	3	0.7%	99	1.8%	1,949	2.4%
Other Services	126	28.0%	1,062	19.1%	7,508	9.4%
Government	4	0.9%	167	3.0%	1,315	1.7%
Unclassified Establishments	22	4.9%	6	0.1%	187	4.8%
Totals	450	100.0%	5,563	100.0%	79,679	100.0%

Source: Copyright 2020 Infogroup, Inc. All rights reserved. Esri Total Residential Population forecasts for 2020.
Date Note: Data on the Business Summary report is calculated using Esri's Data allocation method which uses census block groups to allocate business summary data to custom areas.



Business Summary

3009 S Kansas Expy, Springfield, Missouri, 65807
Rings: 1, 3, 5 mile radii

Prepared by Esri
Latitude: 37.15954
Longitude: -93.31817

by NAICS Codes	Businesses		Employees		Businesses		Employees		Businesses		Employees	
	Number	Percent	Number	Percent	Number	Percent	Number	Percent	Number	Percent	Number	Percent
Agriculture, Forestry, Fishing & Hunting	2	0.4%	2	0.0%	12	0.3%	29	0.0%	21	0.2%	53	0.0%
Mining	0	0.0%	0	0.0%	2	0.1%	6	0.0%	4	0.0%	26	0.0%
Utilities	2	0.4%	264	4.7%	2	0.1%	340	0.4%	6	0.1%	449	0.3%
Construction	33	7.3%	214	3.8%	211	5.4%	1,369	1.7%	493	5.9%	3,864	2.4%
Manufacturing	20	4.4%	336	6.0%	70	1.8%	1,777	2.2%	227	2.7%	6,463	4.0%
Wholesale Trade	33	7.3%	763	13.7%	102	2.6%	1,835	2.3%	255	3.0%	4,751	2.9%
Retail Trade	58	12.9%	964	17.3%	629	16.0%	11,747	14.7%	1,245	14.8%	17,858	11.1%
Motor Vehicle & Parts Dealers	5	1.1%	46	0.8%	64	1.6%	1,651	2.1%	156	1.9%	3,217	2.0%
Furniture & Home Furnishings Stores	4	0.9%	30	0.5%	29	0.7%	262	0.3%	68	0.8%	540	0.3%
Electronics & Appliance Stores	3	0.7%	19	0.3%	20	0.5%	131	0.2%	44	0.5%	364	0.2%
Bldg Material & Garden Equipment & Supplies Dealers	4	0.9%	30	0.5%	27	0.7%	460	0.6%	70	0.8%	1,073	0.7%
Food & Beverage Stores	5	1.1%	223	4.0%	58	1.5%	1,147	1.4%	122	1.4%	1,924	1.2%
Health & Personal Care Stores	8	1.8%	148	2.7%	80	2.0%	1,145	1.4%	120	1.4%	1,526	0.9%
Gasoline Stations	5	1.1%	24	0.4%	18	0.5%	84	0.1%	35	0.4%	185	0.1%
Clothing & Clothing Accessories Stores	4	0.9%	14	0.3%	106	2.7%	1,045	1.3%	175	2.1%	1,442	0.9%
Sport Goods, Hobby, Book, & Music Stores	4	0.9%	19	0.3%	51	1.3%	2,792	3.5%	93	1.1%	3,250	2.0%
General Merchandise Stores	2	0.4%	272	4.9%	53	1.4%	2,251	2.8%	104	1.2%	2,997	1.9%
Miscellaneous Store Retailers	11	2.4%	117	2.1%	102	2.6%	748	0.9%	208	2.5%	1,170	0.7%
Nonstore Retailers	2	0.4%	22	0.4%	22	0.6%	30	0.0%	50	0.6%	170	0.1%
Transportation & Warehousing	5	1.1%	67	1.2%	47	1.2%	568	0.7%	101	1.2%	1,249	0.8%
Information	9	2.0%	108	1.9%	90	2.3%	1,672	2.1%	196	2.3%	4,316	2.7%
Finance & Insurance	30	6.7%	230	4.1%	312	8.0%	2,415	3.0%	622	7.4%	4,888	3.0%
Central Bank/Credit Intermediation & Related Activities	13	2.9%	167	3.0%	103	2.6%	1,238	1.6%	191	2.3%	2,190	1.4%
Securities, Commodity Contracts & Other Financial	8	1.8%	24	0.4%	69	1.8%	365	0.5%	154	1.8%	1,039	0.6%
Insurance Carriers & Related Activities; Funds, Trusts &	9	2.0%	40	0.7%	139	3.5%	813	1.0%	276	3.3%	1,659	1.0%
Real Estate, Rental & Leasing	28	6.2%	146	2.6%	245	6.2%	1,619	2.0%	511	6.1%	3,398	2.1%
Professional, Scientific & Tech Services	51	11.3%	397	7.1%	379	9.7%	2,643	3.3%	900	10.7%	7,131	4.4%
Legal Services	9	2.0%	58	1.0%	79	2.0%	524	0.7%	214	2.5%	1,600	1.0%
Management of Companies & Enterprises	0	0.0%	0	0.0%	9	0.2%	425	0.5%	17	0.2%	541	0.3%
Administrative & Support & Waste Management & Remediation	17	3.8%	121	2.2%	154	3.9%	1,179	1.5%	337	4.0%	3,266	2.0%
Educational Services	9	2.0%	123	2.2%	78	2.0%	1,838	2.3%	210	2.5%	9,599	5.9%
Health Care & Social Assistance	37	8.2%	936	16.8%	474	12.1%	39,017	49.0%	759	9.0%	60,408	37.4%
Arts, Entertainment & Recreation	7	1.6%	43	0.8%	69	1.8%	937	1.2%	156	1.9%	3,357	2.1%
Accommodation & Food Services	18	4.0%	344	6.2%	316	8.1%	5,842	7.3%	665	7.9%	11,902	7.4%
Accommodation	1	0.2%	7	0.1%	14	0.4%	210	0.3%	50	0.6%	680	0.4%
Food Services & Drinking Places	18	4.0%	337	6.1%	302	7.7%	5,632	7.1%	615	7.3%	11,222	6.9%
Other Services (except Public Administration)	64	14.2%	332	6.0%	504	12.8%	3,004	3.8%	1,096	13.0%	11,091	6.9%
Automotive Repair & Maintenance	11	2.4%	51	0.9%	58	1.5%	416	0.5%	156	1.9%	1,017	0.6%
Public Administration	4	0.9%	167	3.0%	32	0.8%	1,320	1.7%	148	1.8%	6,470	4.0%
Unclassified Establishments	22	4.9%	6	0.1%	187	4.8%	96	0.1%	444	5.3%	447	0.3%
Total	450	100.0%	5,563	100.0%	3,924	100.0%	79,679	100.0%	8,415	100.0%	161,525	100.0%

Source: Copyright 2020 Infogroup, Inc. All rights reserved. Esri Total Residential Population forecasts for 2020.

Date Note: Data on the Business Summary report is calculated using Esri's Data allocation method which uses census block groups to allocate business summary data to custom areas.